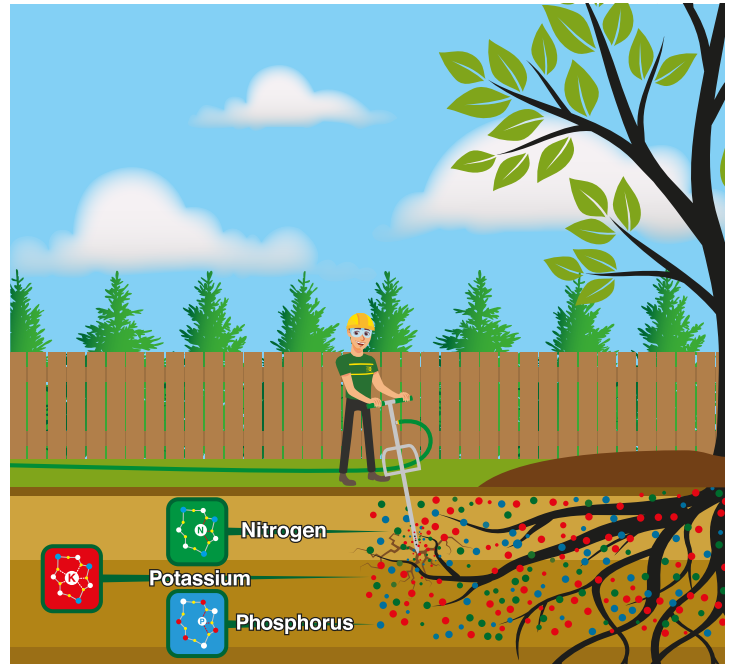


Fertilizing Trees and Shrubs

Importance

In natural woodlands landscapes, decomposing leaf and plant matter provide essential nutrients to established and newly growing trees and shrubs. However, a majority of residential landscapes are composed around the use of lawn grasses while kept free of fallen leaves and clippings. This constant removal of organic matter from the landscape results in nutrient deficient soils and plants. For the sustained health and maximum growing potential of your plants, these deficiencies are correctable through the use of deep root fertilization.



Our technicians will deliver material directly to your plants' root zones to maximize uptake while reducing run-off.

Tree Protection Zone

Based on laboratory soil sampling and catering to the needs of your specific landscape, fertilization may be used to supplement and increase your plants' vigor. Deep root fertilization is a procedure involving the direct exposure of material to a plant's root system. Unlike other methods utilizing surface fertilization, deep root fertilization allows for relatively non-existent runoff and maximum uptake by a plant. Due to the nature of the process, deep root fertilization has an additional benefit of relieving compacted soil. Less compacted soil encourages stronger root growth and the addition of oxygen into its growing environment.

Post Construction Care

Shreiner Tree Care offers a wide variety of liquid fertilizers, soil conditioners, and soil amendments to suit the specific needs of you and your plants. If your trees and shrubbery have not been fertilized in the past year, now is the time to do so!



Fertilization greatly benefits all plants, especially flowering trees.